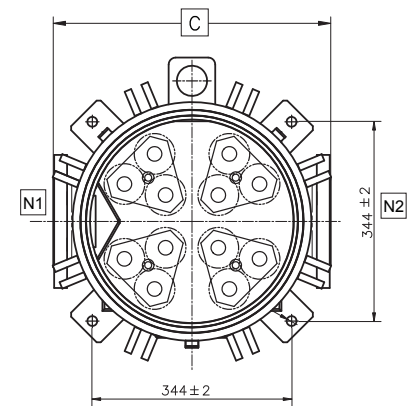
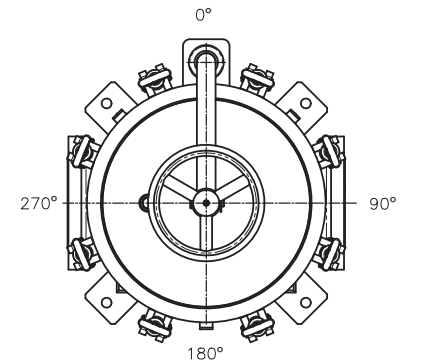
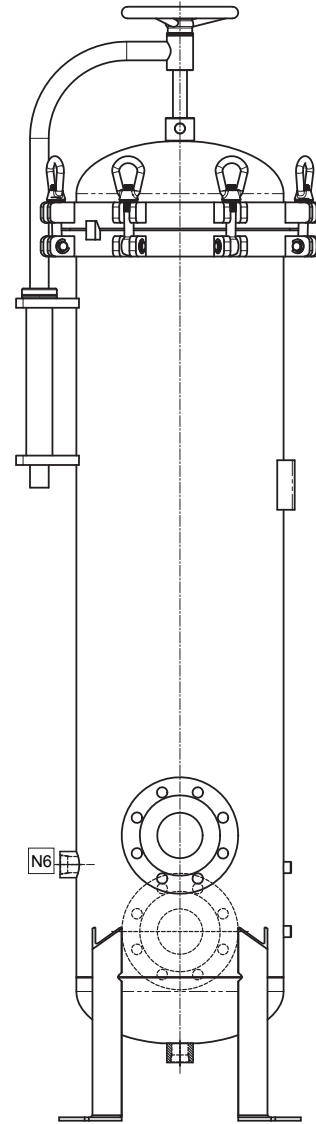
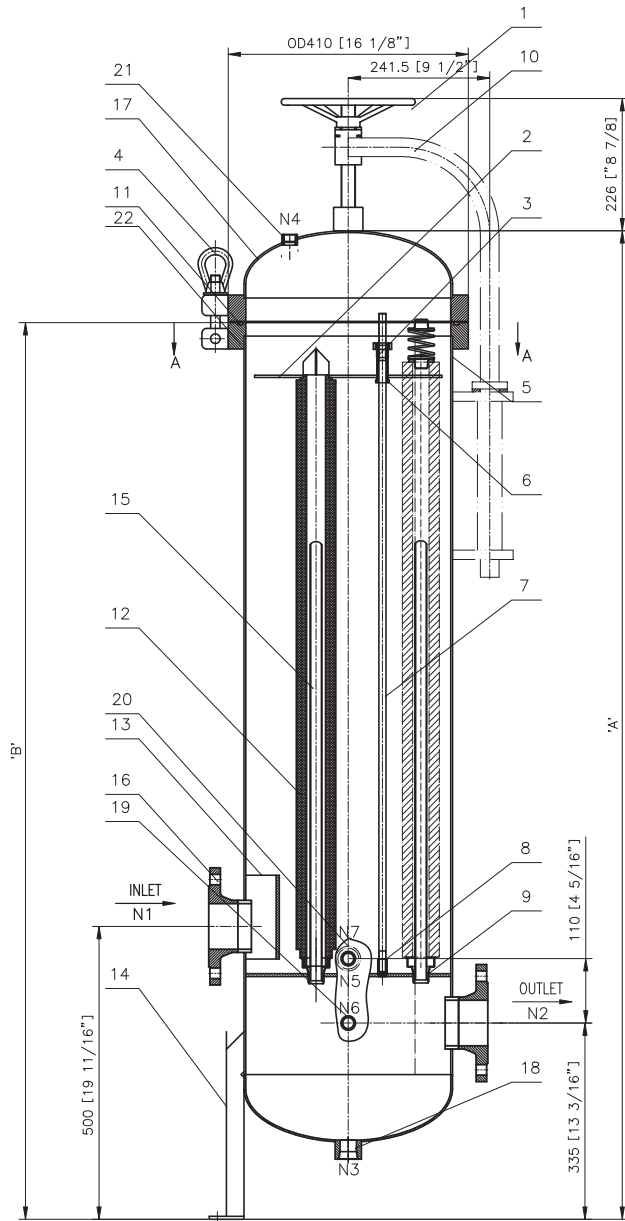


# INOX PREMIER FILTER HOUSING

## PFH-SPC-12



# INOX PREMIER FILTER HOUSING

## PFH-SPC-12

Overall Dimensions			
To Accommodate Filter Qty x Length	A mm	B mm	C mm
12 x 30"	1671	1288	477
12 x 40"	1925	1542	477

Port Details-PFH-SPC-12-40-3F-GP-ML					
No.	Type	Size	No.	Type	Size
N1	Inlet	DN80 PN16 (3" Flange)	N4	Drain (x2)	1" BSPT-F
N2	Outlet	DN80 PN16 (3" Flange)	N5	Gauge (x2)	1/4" BSPT-F
N3	Vent	1/2" BSPT-F	N6	Dirty Drain	1" BSPT-F

Port Details-PFH-SPC-12-40-4F-GP-ML					
No.	Type	Size	No.	Type	Size
N1	Inlet	DN100 PN16 (4" Flange)	N4	Drain (x2)	1" BSPT-F
N2	Outlet	DN100 PN16 (4" Flange)	N5	Gauge (x2)	1/4" BSPT-F
N3	Vent	1/2" BSPT-F	N6	Dirty Drain	1" BSPT-F

Components					
No.	Name	Material	No.	Name	Material
1	Lid	316	10	Hold Down Plate (x4)	316L
2	Eye (x10)	304	11	Tightening Knob (x4)	316L
3	Swing Bolt (x10)	Zinc Plated Steel	12	Shell & Lid Flange	316L
4	O-Ring	BUNA-N	13	Cartridge Spring Locator (x12)	316L
5	V-Post (x12)	316	14	Body	316L
6	Baffle Plate	316L	15	Guide Bushing (x4)	316L
7	Legs (x4)	304	16	M12 Tie Rod (x4)	316L
8	Davit Wheel	304	17	Tie Rod Retainer (x4)	316L
9	Davit Arm	304	18	Cartridge Cup Adaptor Plate	316L

Technical Information	Maximum Operating Temperature	120°C
<ul style="list-style-type: none"> <li>Pressure relief device should be installed on the outer piping by the customer to assure that pressure in the vessel can not exceed the design pressure indicated</li> <li>Vent, gauge and drain ports fitted with 316L PTFE taped plugs</li> <li>All dimensions are approximate in mm</li> </ul>	Design Pressure	10 bar
	Hydrostatic Test Pressure	13 bar